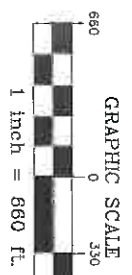
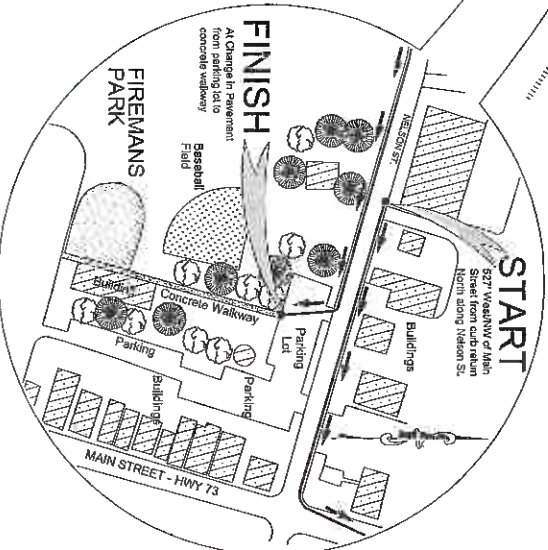
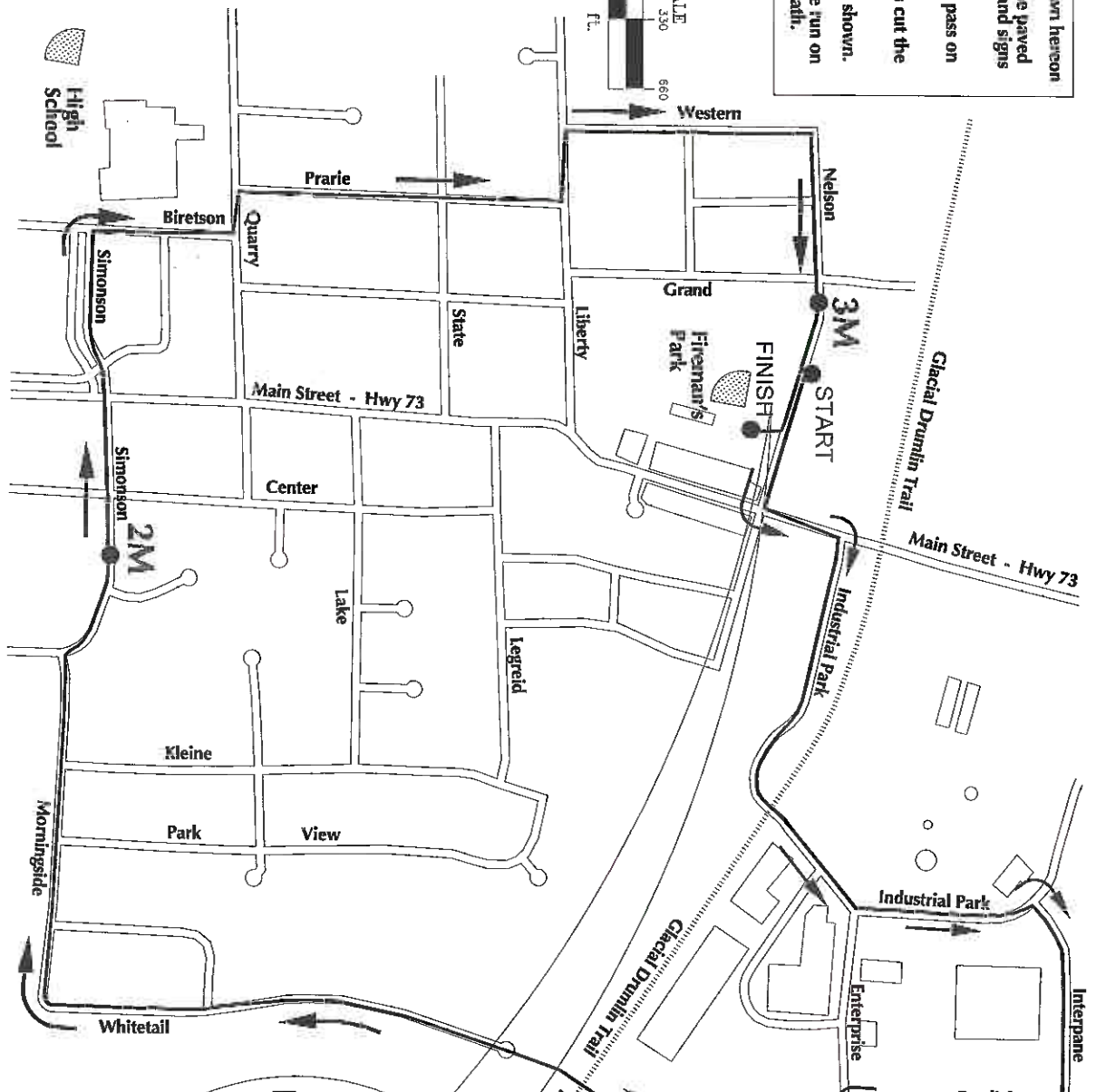


COURSE: is to scale shown hereon
 Runners must stay on the paved road. Follow all cones and signs when present.
 Overtaking runners will pass on the left.
 At NO time will runners cut the corners at intersections.
 All run intersections are shown.
 The entire course will be run on the street. Except bike path.



ELEVATIONS:

| | |
|---------|------|
| Start: | 873' |
| High: | 899' |
| Low: | 850' |
| Finish: | 868' |



- START:** 527' west of Main St. from curb return along Nelson Ave.
- 1 mile - 2' South of Enterprise from curb return along West side of Burdick Ct.
 - 2 mile - 21' East of Center St. from curb return along South side of Simonson St.
 - 3 mile - 92' West of N Grand from curb return along South side of Nelson St.
- FINISH:** At change in pavement from parking lot to conc. walkway

Deerfield Dash 5K

Website: www.deerfield-chamber.com/dash.html
 as of date of measure: 04/20/09
 Measured by: Paul F. Fritz with RaceMeasure
 Fireman's Park
 Deerfield, WI

USAT&F Certificate: #
 Expires: 12-31-2019
 W1-09015-DM

PROFILE

